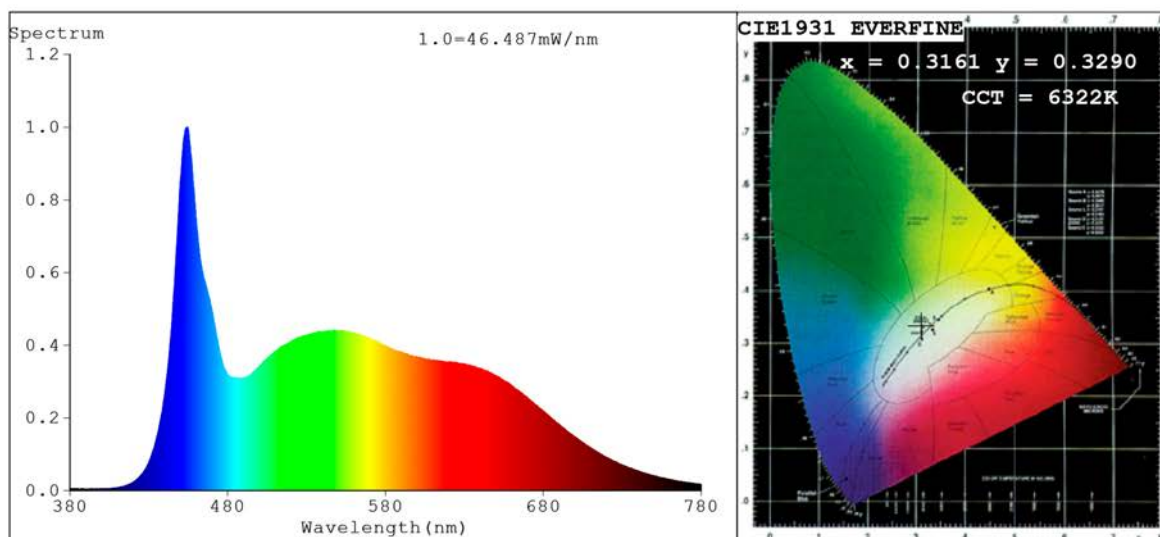


Spectrum Test Report



Color Parameters:

Chromaticity Coordinate: $x=0.3161$ $y=0.3290$ / $u'=0.2002$ $v'=0.4689$
 CCT=6322K (Duv=0.0015) Dominant WL:Ld =488.5nm Purity=6.1%
 Ratio:R=15.3% G=78.1% B=6.6%; Peak WL:Lp=454.6nm FWHM=24.6nm
 Render Index:Ra=93.8 CRI=91.2 TM30:Rf=89 Rg=99 Lav=551.4nm
 R1 =95 R2 =97 R3 =95 R4 =91 R5 =92 R6 =92 R7 =95
 R8 =92 R9 =84 R10=91 R11=92 R12=65 R13=96 R14=98 R15=94

Photo Parameters:

Flux = 1358 lm Eff. : 115.71 lm/W Fe = 5.012 W Scotopic:3202.4 S/P:2.3576

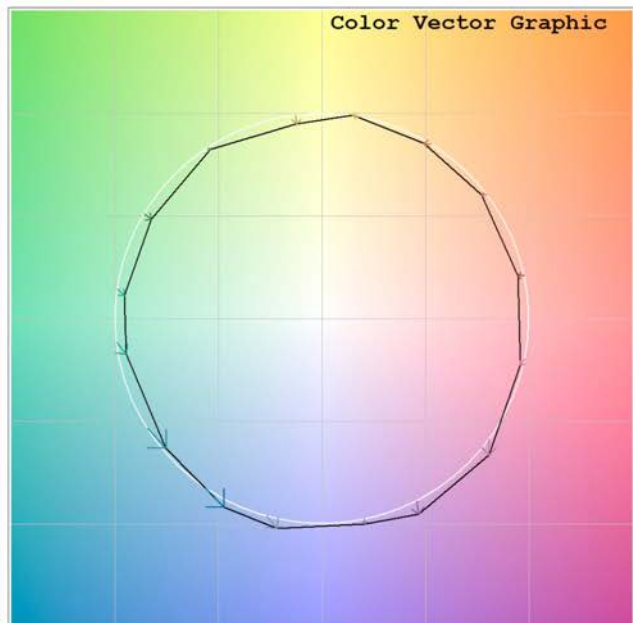
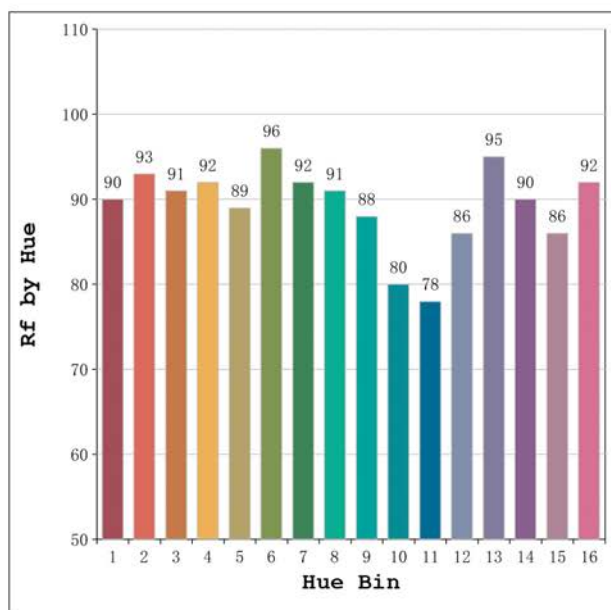
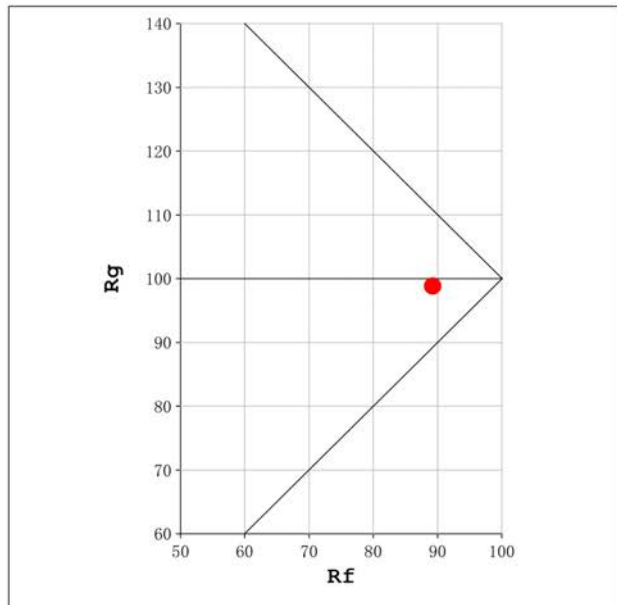
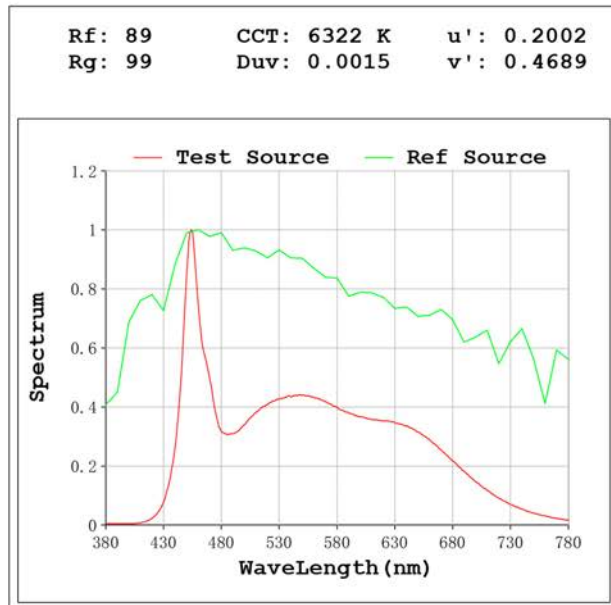
Electrical parameters:

V = 23.998 V I = 0.4892 A P = 11.74 W PF = 1.000

Status: Integral T = 602 ms Ip = 42673 (65%)

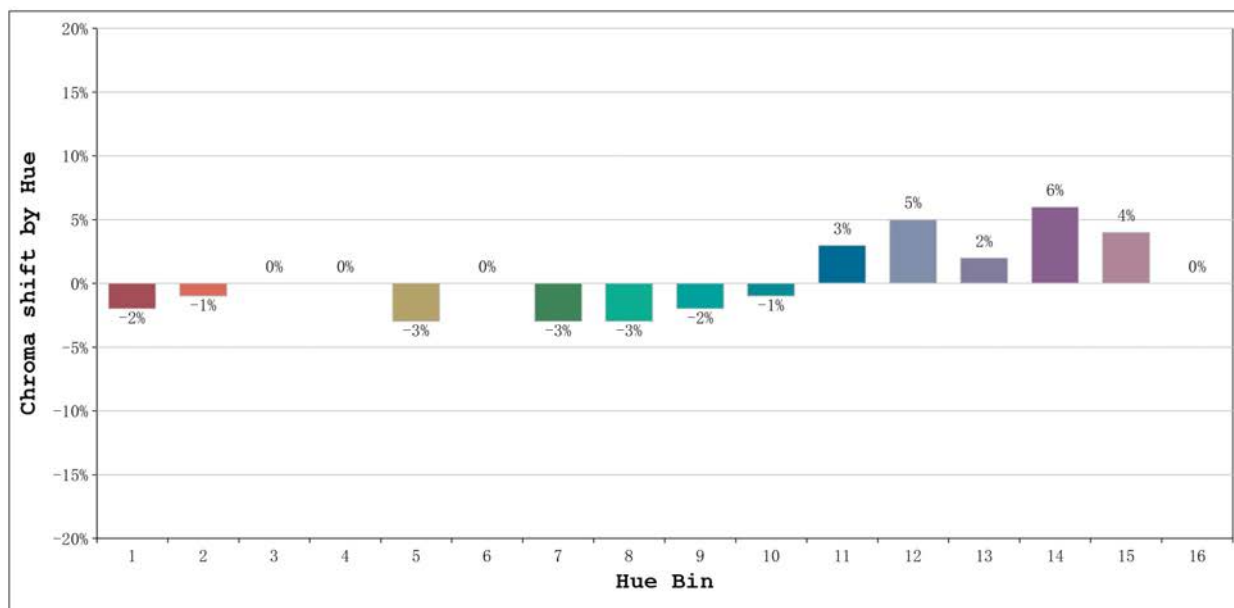
Model:Ecoled Cies pro 6000K
 Tester:Sergio Carneros
 Temperature:25Deg
 Manufacturer:Luz Negra S.L.

Number: 32.086
 Date:26-5-2021
 Humidity:57%
 Remarks:100cm Tira flexible



Model:Ecoled Cies pro 6000K
 Tester:Sergio Carneros
 Temperature:25Deg
 Manufacturer:Luz Negra S.L.

Number: 32.086
 Date:26-5-2021
 Humidity:57%
 Remarks:100cm Tira flexible



Hue Bin	Hue Angle	Rf	Graphic shift(%)	
			Chroma	Hue
1	0.0° - 22.5°	90	-2	1
2	22.5° - 45.0°	93	-1	2
3	45.0° - 67.5°	91	0	3
4	67.5° - 90.0°	92	0	4
5	90.0° - 112.5°	89	-3	0
6	112.5° - 135.0°	96	0	0
7	135.0° - 157.5°	92	-3	0
8	157.5° - 180.0°	91	-3	3
9	180.0° - 202.5°	88	-2	7
10	202.5° - 225.0°	80	-1	13
11	225.0° - 247.5°	78	3	13
12	247.5° - 270.0°	86	5	6
13	270.0° - 292.5°	95	2	0
14	292.5° - 315.0°	90	6	-2
15	315.0° - 337.5°	86	4	-5
16	337.5° - 360.0°	92	0	-2

Model:Ecoled Cies pro 6000K
Tester:Sergio Carneros
Temperature:25Deg
Manufacturer:Luz Negra S.L.

Number: 32.086
Date:26-5-2021
Humidity:57%
Remarks:100cm Tira flexible